

**fabric**  
**swatch**  
**quick look**  
**rivestimenti**  
**finishes**  
**revêtements**

**MILANI**

# TS2 NE

Tessuto ignifugo Classe 1IM\*  
Fire retardant fabric  
Tissu ignifuge M1

Composizione / Composition / Composition  
**100% PL FR**

Peso / Weight / Poids  
**330 gr/m2**

Resistenza alla luce / Light fastness / Résistance  
à la lumière  
**5 (EN ISO 105 B02)**

Resistenza allo sfregamento / Fastness to rubbing  
/ Solidité au frottement  
**100.000 cycles Martindale**

Ignifugità / Fire retardancy / Réaction au feu  
**CLASSE 1 IM\***  
**EN 1021-1/2 cigarette & match test UK**  
**M1 FR**

Manutenzione / Maintenance / Entretien  
**Aspirare regolarmente / Vacuum regularly**  
**/ Aspirer régulièrement**



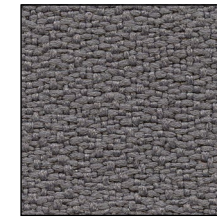
NE 0643



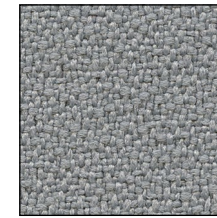
NE 0018



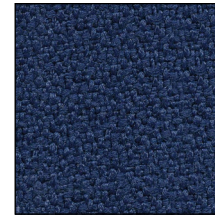
NE 0573



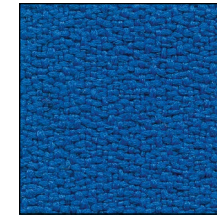
NE 0625



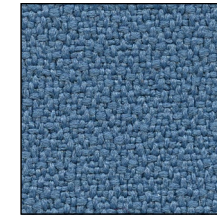
NE 0015



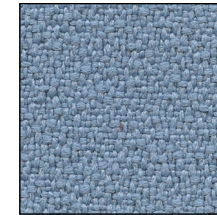
NE 0333



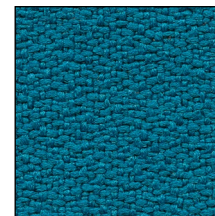
NE 0331



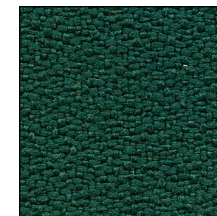
NE 0378



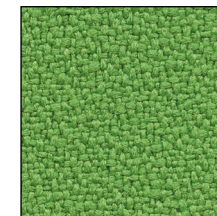
NE 0377



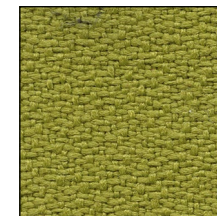
NE 0411



NE 0496



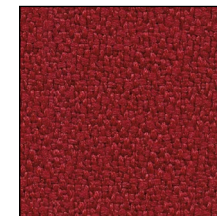
NE 0014



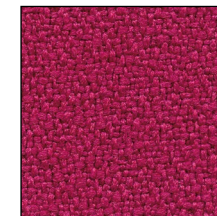
NE 0426



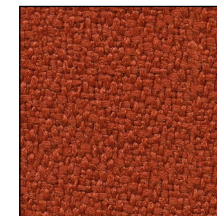
NE 0234



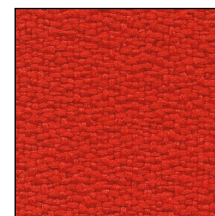
NE 0236



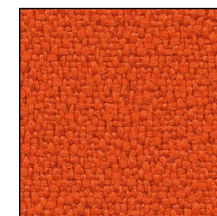
NE 0173



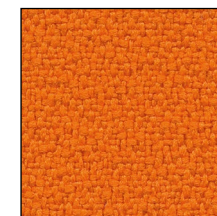
NE 0572



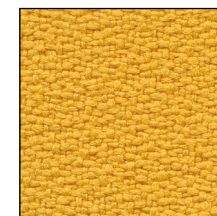
NE 0013



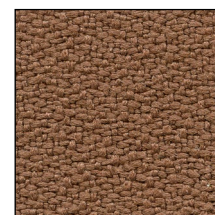
NE 0120



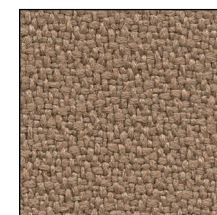
NE 0012



NE 0053



NE 0534



NE 0533



NE 0532

\*CLASSE 1M in combinazione con gomma ignifuga. Disponibile a seconda dei modelli.

## TS2 MI

Tessuto ignifugo  
Fire retardant fabric  
Tissu ignifuge M1



Composizione / Composition / Composition  
**100% PES Trevira CS**

Peso / Weight / Poids  
**340 gr/m2**



Resistenza alla luce / Light fastness / Résistance  
à la lumière  
**6 (EN ISO 105 B02)**

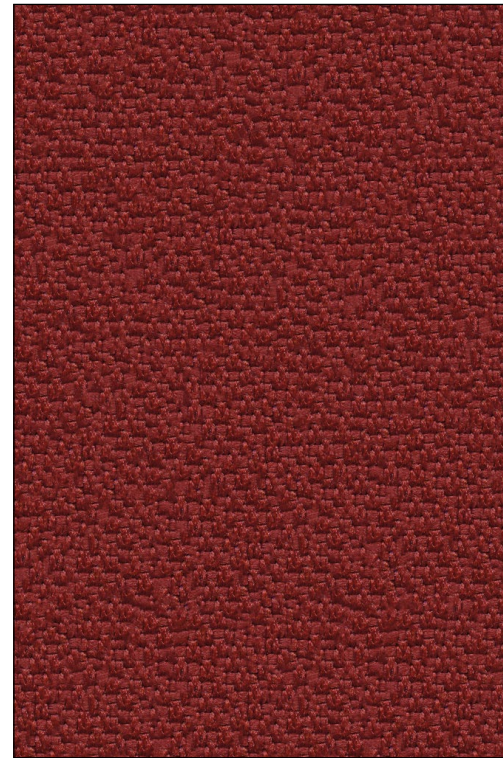


Resistenza allo sfregamento / Fastness to rubbing  
/ Solidité au frottement  
**100.000 Martindale**



Ignifugità / Fire retardancy / Réaction au feu  
**CLASSE 1 IT**  
**EN 1021-1/2 cigarette & match test UK**  
**CRIB 5 (BS5852 Part II)**  
**M1 FR**

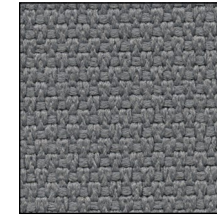
Manutenzione / Maintenance / Entretien  
**Aspirare regolarmente / Vacuum regularly**  
**/ Aspirer régulièrement**



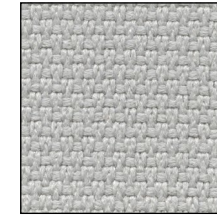
MI 4003



MI 8033



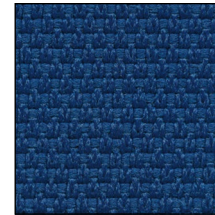
MI 8011



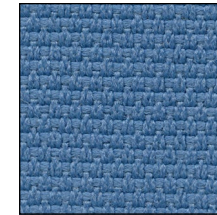
MI 8004



MI 1006



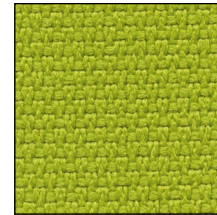
MI 6015



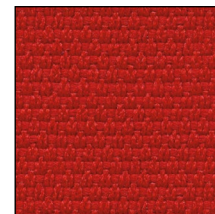
MI 6012



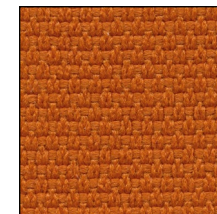
MI 7007



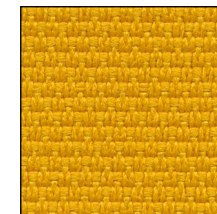
MI 7022



MI 4028



MI 4030



MI 3008

# TS2 ZS

Finta pelle ignifuga Classe 1IM\*  
Fire retardant faux leather  
Simili cuir ignifuge



Composizione / Composition / Composition

**85% PVC**  
**10% PL**  
**5% CO**

Peso / Weight / Poids  
**600 gr/m2**



Resistenza alla luce / Light fastness / Résistance  
à la lumière  
**5-6 (EN ISO 105 B02)**

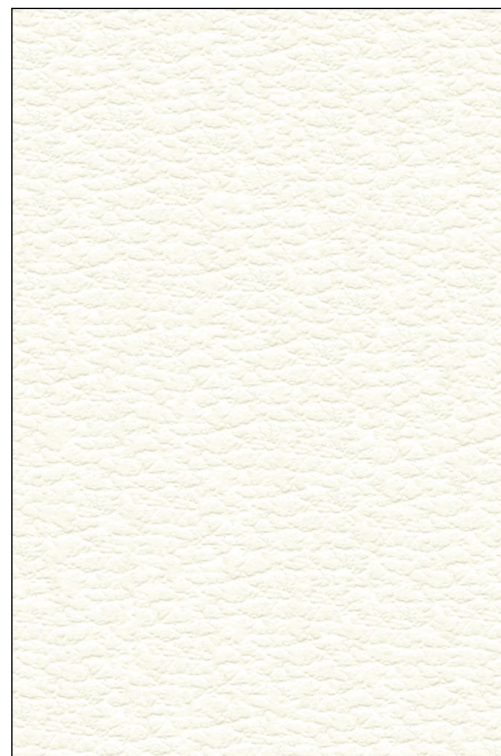


Resistenza allo sfregamento / Fastness to rubbing  
/ Solidité au frottement  
**> 51.000 Martindale**



Ignifugità / Fire retardancy / Réaction au feu  
**CLASSE 1 IM\***  
**EN 1021-1/2 cigarette & match test UK**

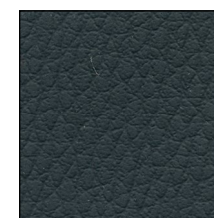
Manutenzione / Maintenance / Entretien  
**Usare acqua e saponi neutri, non usare  
prodotti chimici / Use mild soap and  
water, do not use chemical products  
/ Utiliser savon neutre et eau, ne pas  
utiliser produits chimiques**



ZS 01B4



ZS 0901



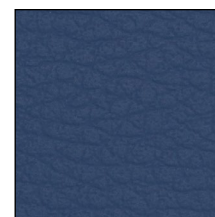
ZS 02F1



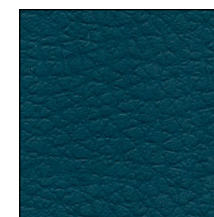
ZS 02E8



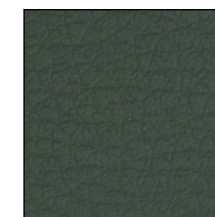
ZS 02DO



ZS 0811



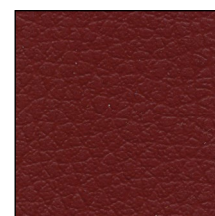
ZS 07KF



ZS 07F3



ZS 07EV



ZS 06ME



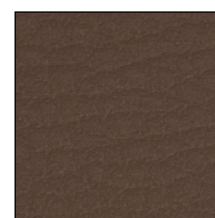
ZS 06KO



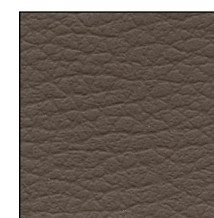
ZS 06M7



ZS 06KN



ZS 05HO



ZS 05L1



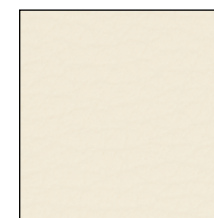
ZS 04HJ



ZS 04L1



ZS 03CV



ZS 04H0

**TS3**  
**RC**

Tessuto ignifugo Classe 1  
Fire retardant fabric  
Tissu ignifuge M1



Composizione / Composition / Composition  
**100% PES Trevira CS**

Peso / Weight / Poids  
**330 gr/m2**



Resistenza alla luce / Light fastness / Résistance  
à la lumière  
**6 (EN ISO 105 B02)**



Resistenza allo sfregamento / Fastness to rubbing  
/ Solidité au frottement  
**70.000 cycles Martindale**

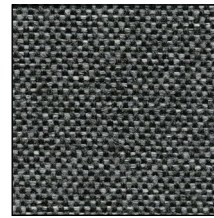


Ignifugità / Fire retardancy / Réaction au feu  
**CLASSE 1 IT**  
**EN 1021-1/2 cigarette & match test UK**  
**CRIB 5 (BS5852 Part II)**  
**M1 FR**

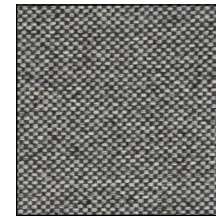
Manutenzione / Maintenance / Entretien  
**Aspirare regolarmente / Vacuum regularly**  
**/ Aspirer régulièrement**



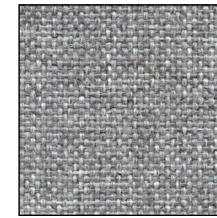
**RC 1503**



**RC 8030**



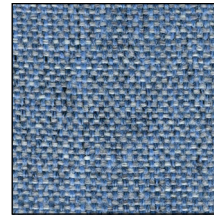
**RC 8502**



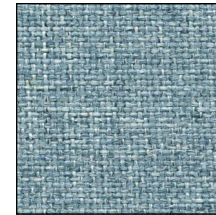
**RC 8501**



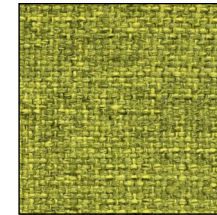
**RC 1502**



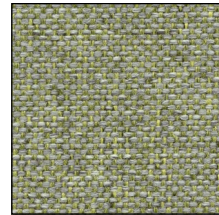
**RC 6503**



**RC 6501**



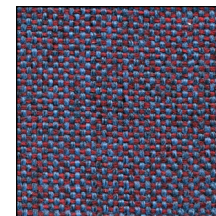
**RC 7502**



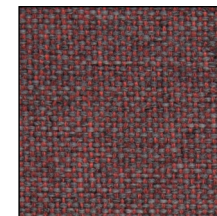
**RC 7504**



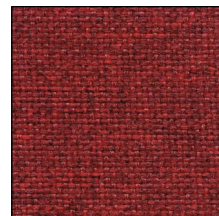
**RC 6508**



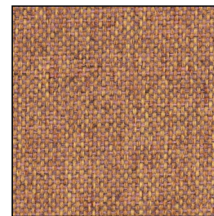
**RC 5501**



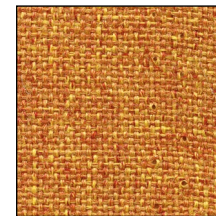
**RC 4502**



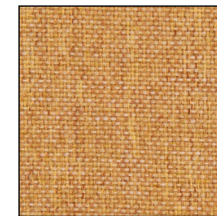
**RC 4504**



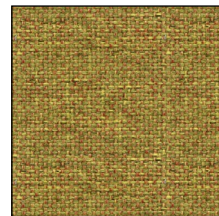
**RC 5504**



**RC 3503**



**RC 3504**



**RC 3508**



**RC 1501**

**TS3**  
**ML**

Tessuto ignifugo  
Fire retardant fabric  
Tissu ignifuge



Composizione / Composition / Composition  
**70% Lana / Wool / Laine**  
**30% Flax**

Peso / Weight / Poids  
**435 gr/m2**



Resistenza alla luce / Light fastness / Résistance  
à la lumière  
**5 (EN ISO 105 B02)**



Resistenza allo sfregamento / Fastness to rubbing  
/ Solidité au frottement  
**50.000 Martindale**

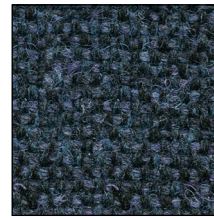


Ignifugità / Fire retardancy / Réaction au feu  
**EN 1021-1/2 cigarette & match test UK**

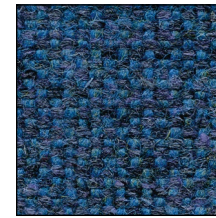
Manutenzione / Maintenance / Entretien  
**Aspirare regolarmente / Vacuum regularly**  
**/ Aspirer régulièrement**



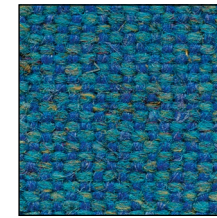
**ML 0020**



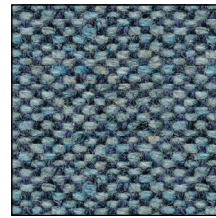
**ML 0036**



**ML 0035**



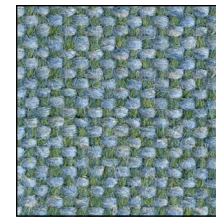
**ML 0034**



**ML 0022**



**ML 0024**



**ML 0025**



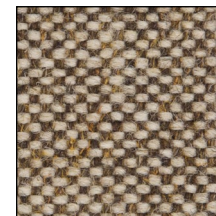
**ML 0021**



**ML 0018**



**ML 0016**



**ML 0023**



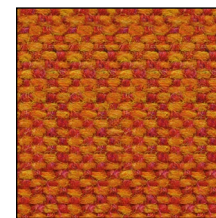
**ML 0002**



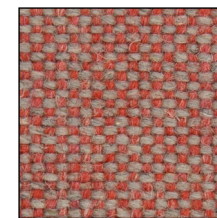
**ML 0010**



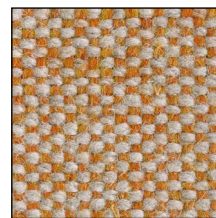
**ML 0014**



**ML 0013**



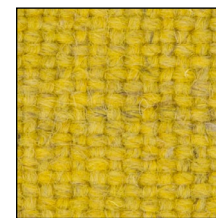
**ML 0003**



**ML 0008**



**ML 0007**



**ML 0017**

**TS3**  
**ER**

Tessuto ignifugo  
Fire retardant fabric  
Tissu ignifuge



Composizione / Composition / Composition  
**100% PES**

Peso / Weight / Poids  
**260 gr/m2**



Resistenza alla luce / Light fastness / Résistance  
à la lumière  
**AATCC-16 Class 4**

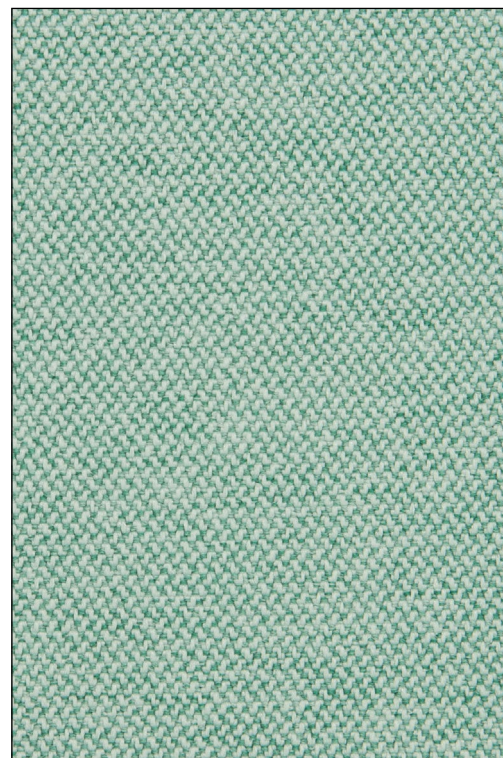


Resistenza allo sfregamento / Fastness to rubbing  
/ Solidité au frottement  
**> 100.000 Martindale cycles**

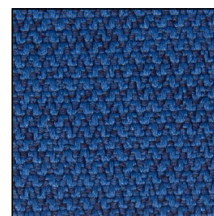


Ignifugità / Fire retardancy / Réaction au feu  
**EN 1021-1/2 cigarette & match test UK**

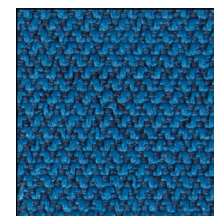
Manutenzione / Maintenance / Entretien  
**Aspirare regolarmente / Vacuum regularly  
/ Aspirer régulièrement**



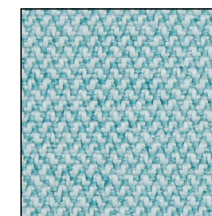
**ER 0036**



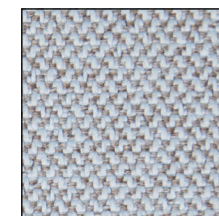
**ER 0040**



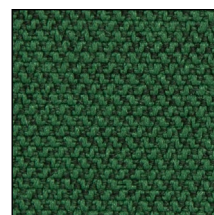
**ER 0015**



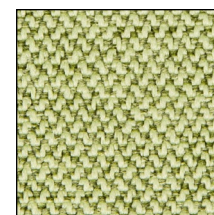
**ER 0020**



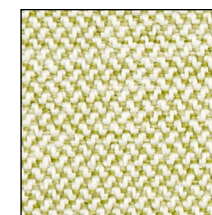
**ER 0039**



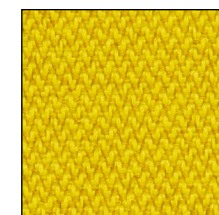
**ER 0035**



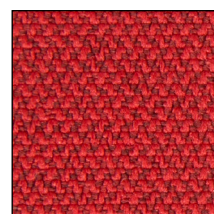
**ER 0034**



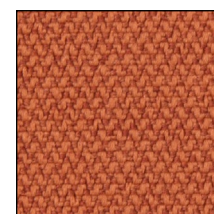
**ER 0033**



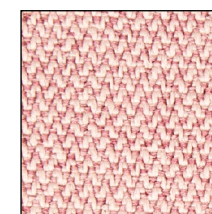
**ER 0032**



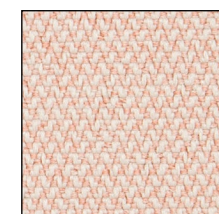
**ER 0006**



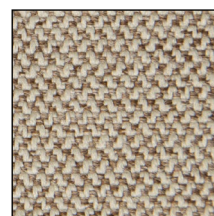
**ER 0029**



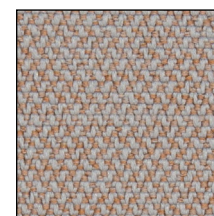
**ER 0024**



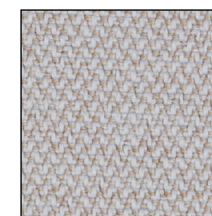
**ER 0019**



**ER 0002**



**ER 0023**



**ER 0041**

**TS3**  
**FE**

Tessuto lana ignifugo  
Fire retardant wool fabric  
Tissu laine ignifuge



Composizione / Composition / Composition  
**70% Lana / Wool / Laine**  
**25% PA**

Peso / Weight / Poids  
**335 g/m2**



Resistenza alla luce / Light fastness / Résistance  
à la lumière  
**6 (UNI EN ISO 105-B02)**



Resistenza allo sfregamento / Fastness to rubbing  
/ Solidité au frottement  
**> 100.000 Martindale cycles**

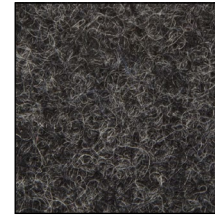


Ignifugità / Fire retardancy / Réaction au feu  
**EN 1021-1/2 cigarette & match test UK**

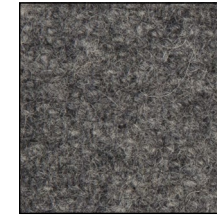
Manutenzione / Maintenance / Entretien  
**Aspirare regolarmente, senza spazzolare**  
**/ Vacuum regularly, without rubbing**  
**/ Aspirer régulièrement, sans brosser**



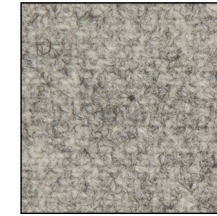
**FE 0453**



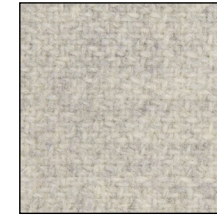
**FE 0603**



**FE 0602**



**FE 0601**



**FE 0621**



**FE 0302**



**FE 0301**



**FE 0512**



**FE 0505**



**FE 0201**



**FE 0103**



**FE 0504**



**FE 0551**



**FE 0052**



**TS3**  
**SL**

Tessuto riciclato ignifugo  
Fire retardant recycled fabric  
Tissu recyclé ignifuge



Composizione / Composition / Composition  
**100% PES riciclato certificato Seaqual**  
**/ recycled Seaqual certified / recyclé**  
**certifié Seaqual**

Peso / Weight / Poids  
**460 g/m2**



Resistenza alla luce / Light fastness / Résistance  
à la lumière  
**6 (UNI EN ISO 105-B02)**

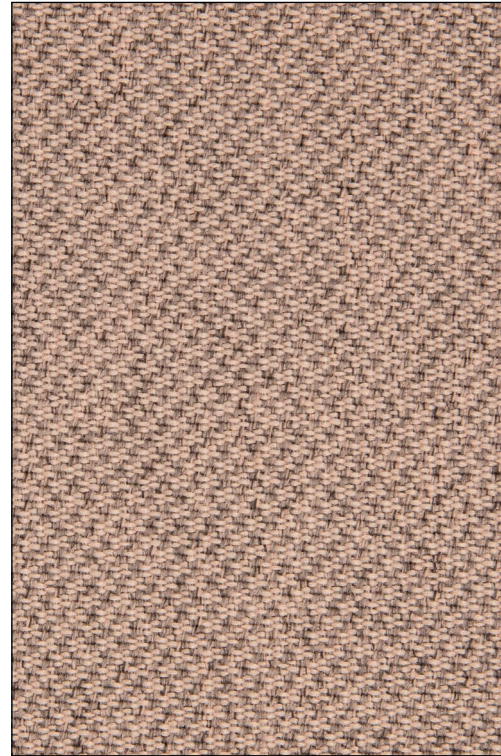


Resistenza allo sfregamento / Fastness to rubbing  
/ Solidité au frottement  
**> 100.000 Martindale cycles**



Ignifugità / Fire retardancy / Réaction au feu  
**CLASSE 1 IT**  
**EN 1021-1/2 cigarette & match test UK**

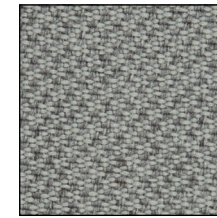
Manutenzione / Maintenance / Entretien  
**Aspirare regolarmente / Vacuum regularly**  
**/ Aspirer régulièrement**



**SL 4522**



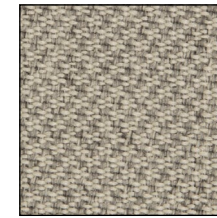
**SL 8517**



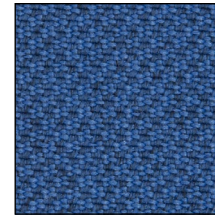
**SL 8532**



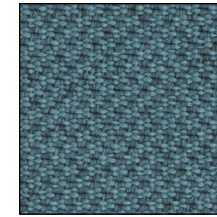
**SL 2519**



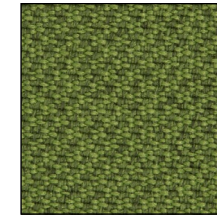
**SL 1506**



**SL 6512**



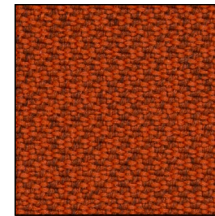
**SL 7504**



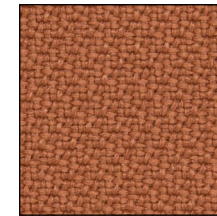
**SL 7521**



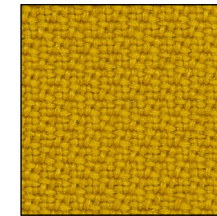
**SL 7029**



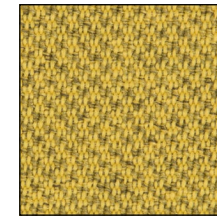
**SL 4566**



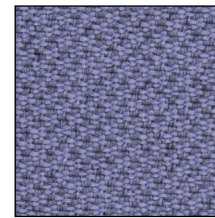
**SL 4037**



**SL 3030**



**SL 3509**



**SL 5592**

TS3  
**CS**

Tessuto ignifugo  
Fire retardant fabric  
Tissu ignifuge



Composizione / Composition / Composition  
**100% PES**

Peso / Weight / Poids  
**570 g/m2**



Resistenza alla luce / Light fastness / Résistance  
à la lumière  
**4 (UNI EN ISO 105-B02)**

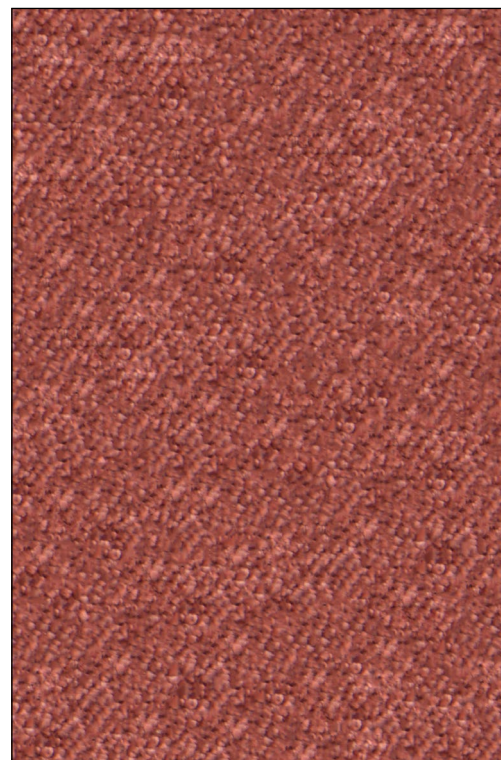


Resistenza allo sfregamento / Fastness to rubbing  
/ Solidité au frottement  
**> 80.000 Martindale cycles**

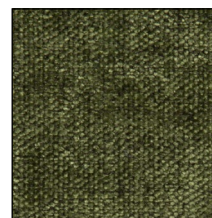


Ignifugità / Fire retardancy / Réaction au feu  
**EN 1021-1/2 cigarette & match test UK**

Manutenzione / Maintenance / Entretien  
**Aspirare regolarmente / Vacuum regularly  
/ Aspirer régulièrement**



**CS 0200**



**CS 0506**



**CS 0609**



**CS 0804**



**CS 0604**



**CS 0301**

TS3  
**MA**

Finta pelle ignifuga  
Fire retardant faux leather  
Simili cuir ignifuge



Composizione / Composition / Composition

**88% PVC**  
**7% PL**  
**5% CO**

Peso / Weight / Poids  
**715 gr/m2**



Resistenza alla luce / Light fastness / Résistance  
à la lumière  
**7 (EN ISO 105 B02)**



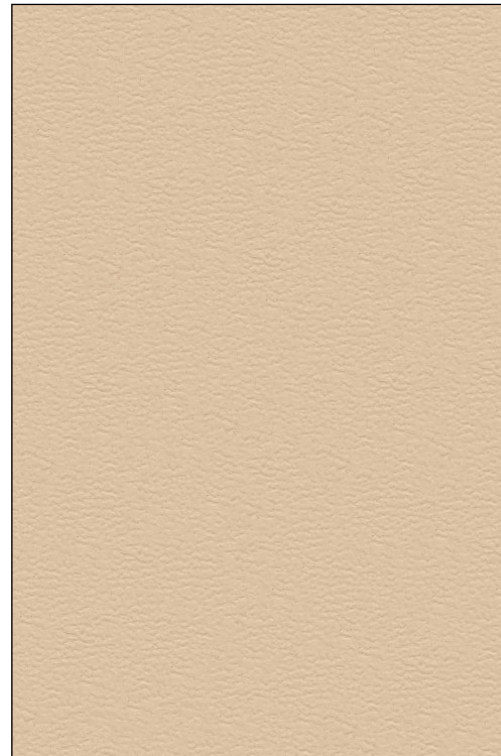
Resistenza allo sfregamento / Fastness to rubbing  
/ Solidité au frottement  
**200.000 cycles Martindale**



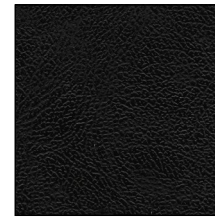
Ignifugità / Fire retardancy / Réaction au feu  
**CLASSE 1 IT**  
**EN 1021-1/2 cigarette & match test UK**

Manutenzione / Maintenance / Entretien

**Usare acqua e saponi neutri, non usare  
prodotti chimici / Use mild soap and water,  
do not use chemical products / Utiliser  
savon neutre et eau, ne pas utiliser  
produits chimiques**



MA 0102



MA 0200



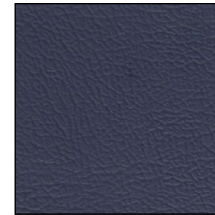
MA 0602



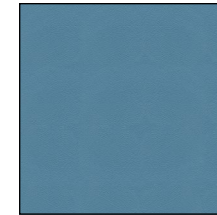
MA 0607



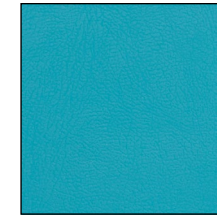
MA 0603



MA 0700



MA 0706



MA 0702



MA 0803



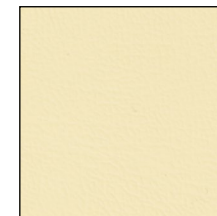
MA 0304



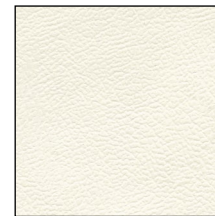
MA 0902



MA 0402



MA 0508



MA 0100

# PLUS MX

Tessuto Remix 3 ignifugo  
Remix 3 fire retardant fabric  
Tissu ignifuge Remix 3



Composizione / Composition / Composition

**90% Pura lana vergine / Pure virgin wool  
/ Pure laine vierge  
10% Nylon**

Peso / Weight / Poids

**415 gr/m2**



Resistenza alla luce / Light fastness / Résistance  
à la lumière

**5-7 (EN ISO 4892-2/06)**



Resistenza allo sfregamento / Fastness to rubbing  
/ Solidité au frottement

**100.000 Martindale**

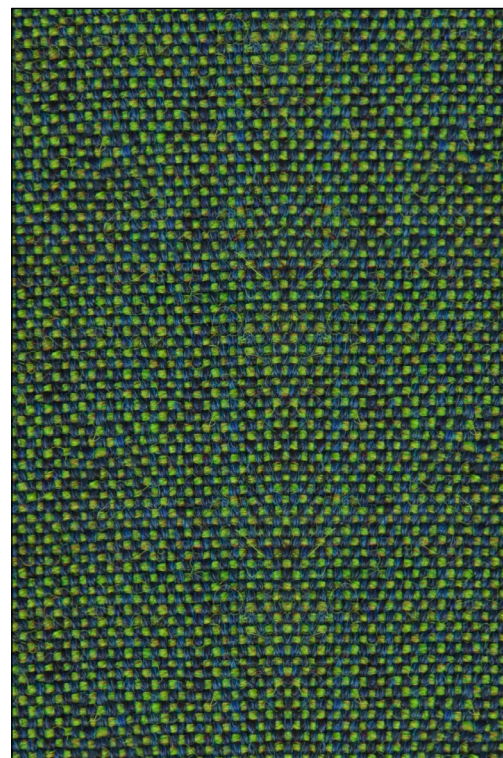


Ignifugità / Fire retardancy / Réaction au feu

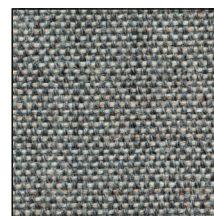
**EN 1021-1/2 cigarette & match test UK**

Manutenzione / Maintenance / Entretien

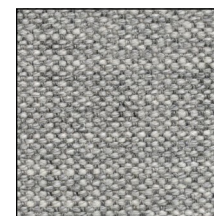
**Aspirare regolarmente / Vacuum regularly  
/ Aspirer régulièrement**



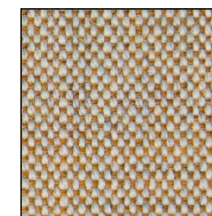
**MX 0982**



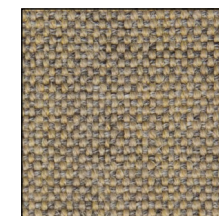
**MX 0133**



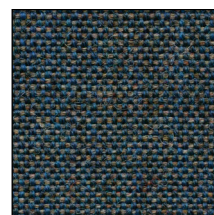
**MX 0123**



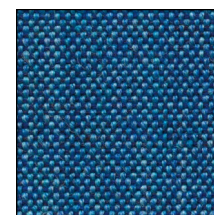
**MX 0242**



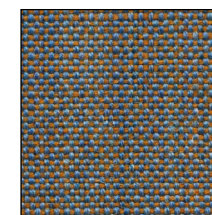
**MX 0233**



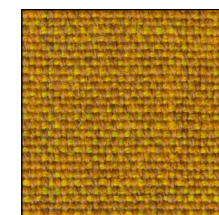
**MX 0753**



**MX 0762**



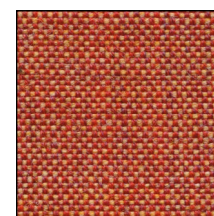
**MX 0722**



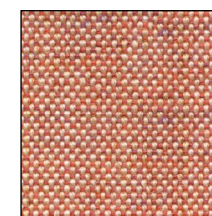
**MX 0422**



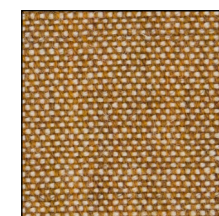
**MX 0653**



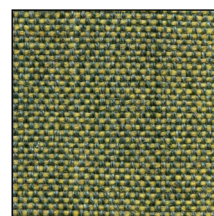
**MX 0632**



**MX 0612**



**MX 0252**



**MX 0933**

# PLUS RI

Tessuto Rime ignifugo  
Rime fire retardant fabric  
Tissu ignifuge Rime



Composizione / Composition / Composition

**90% Pura lana vergine / Pure virgin wool  
/ Pure laine vierge  
10% Nylon**

Peso / Weight / Poids

**580 gr/m2**



Resistenza alla luce / Light fastness / Résistance  
à la lumière

**5 (EN ISO 4892-2/06)**



Resistenza allo sfregamento / Fastness to rubbing  
/ Solidité au frottement

**100.000 Martindale**

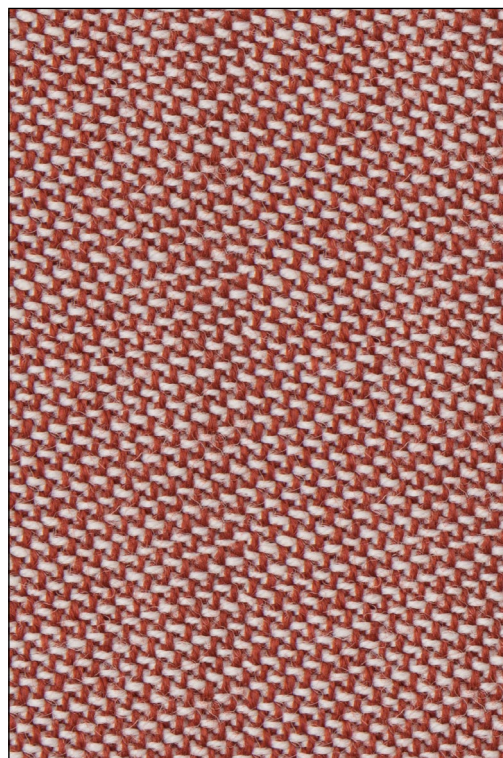


Ignifugità / Fire retardancy / Réaction au feu

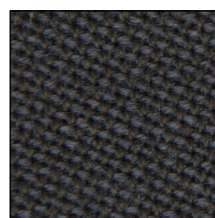
**EN 1021-1/2 cigarette & match test UK**

Manutenzione / Maintenance / Entretien

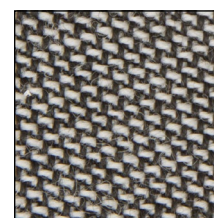
**Aspirare regolarmente / Vacuum regularly  
/ Aspirer régulièrement**



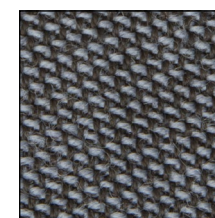
RI 0541



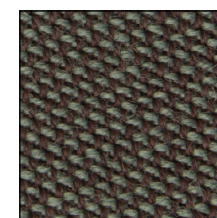
RI 0791



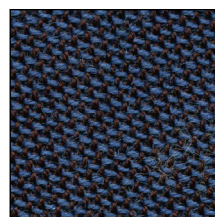
RI 0151



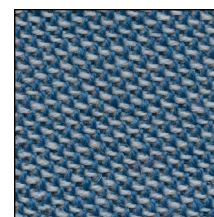
RI 0741



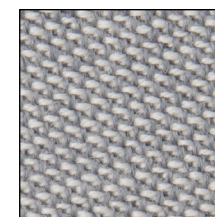
RI 0981



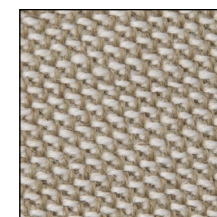
RI 0781



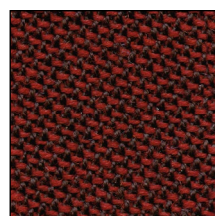
RI 0721



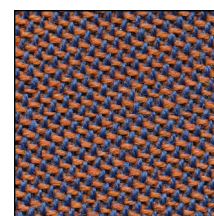
RI 0131



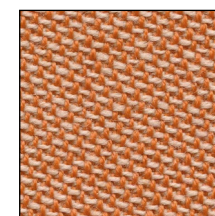
RI 0231



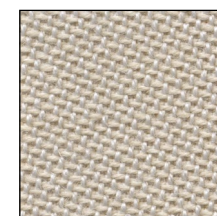
RI 0591



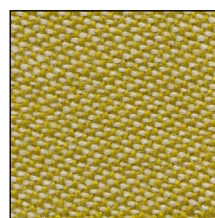
RI 0731



RI 0521



RI 0111



RI 0911

# PLUS CZ

Tessuto ignifugo Cortez  
Cortez fire retardant fabric  
Tissu ignifuge Cortez



Composizione / Composition / Composition  
**100% PL Trevira CS**

Peso / Weight / Poids  
**620 gr/m2**



Resistenza alla luce / Light fastness / Résistance  
à la lumière  
**5 (EN ISO 105 B02)**



Resistenza allo sfregamento / Fastness to rubbing  
/ Solidité au frottement  
**80.000 Martindale**



Ignifugità / Fire retardancy / Réaction au feu  
**EN 1021-1/2 cigarette & match test UK**

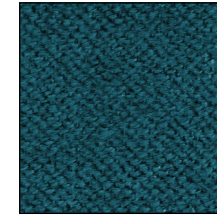
Manutenzione / Maintenance / Entretien  
**Usare acqua e saponi neutri, non usare  
prodotti chimici / Use mild soap and water,  
do not use chemical products / Utiliser  
savon neutre et eau, ne pas utiliser  
produits chimiques**



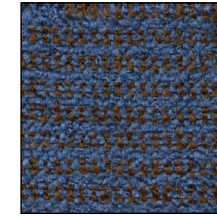
CZ 0016



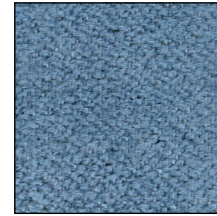
CZ 0010



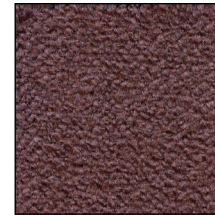
CZ 0013



CZ 0012



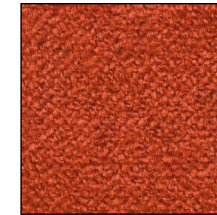
CZ 0011



CZ 0024



CZ 0021



CZ 0020



CZ 0004

# LN

Pelle fiore  
Full grain leather  
Cuir pleine fleur



Composizione / Composition / Composition  
**Pelle bovina / Bovine leather / Cuir bovin**

Spessore / Thickness / Epaisseur  
**0,90/1,00 mm**

Grandezza media / Average size / Dimension  
moyenne  
**4,20 m<sup>2</sup>**



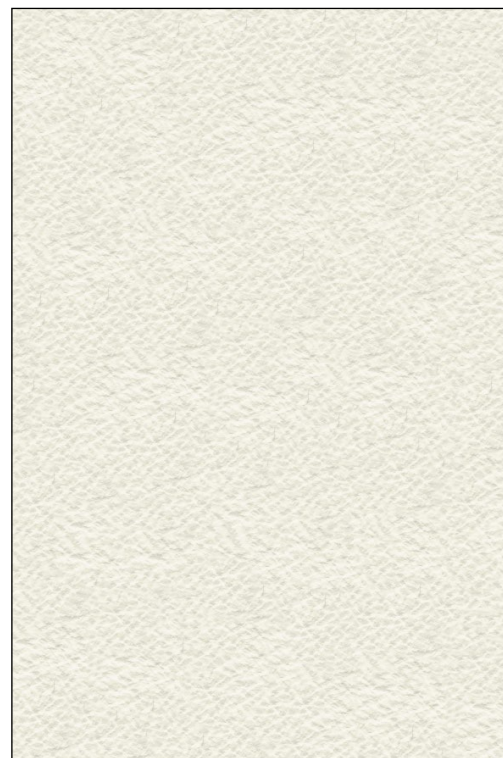
Resistenza alla luce / Light fastness / Résistance  
à la lumière  
**5 (EN ISO 105 B02)**



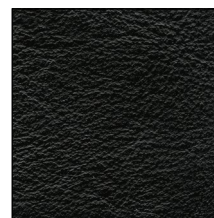
Resistenza allo sfregamento / Fastness to rubbing  
/ Solidité au frottement  
**40.000 Martindale**

Manutenzione / Maintenance / Entretien

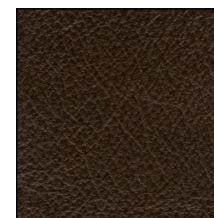
**Usare acqua e saponi neutri, non usare  
prodotti chimici / Use mild soap and water,  
do not use chemical products / Utiliser  
savon neutre et eau, ne pas utiliser  
produits chimiques**



LN 2000



LN 1000



LN 2557



LN 2500



LN 2523



LN 3364



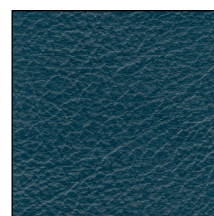
LN 5478



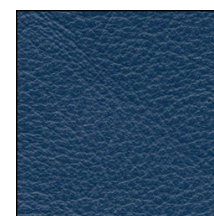
LN 0632



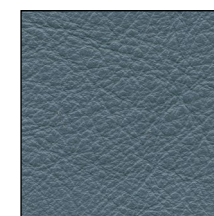
LN 3396



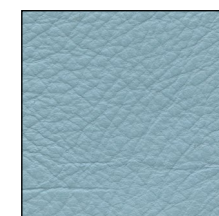
LN 0443



LN 6644



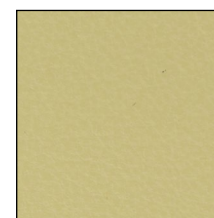
LN 3348



LN 2527



LN 0837



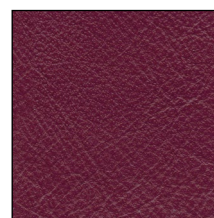
LN 2335



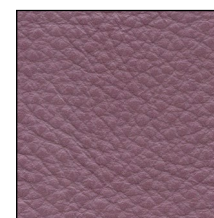
LN 5432



LN 2220



LN 7701



LN 7704



LN 2511



LN 6688



LN 6400

**LX**

Pelle smerigliata  
Corrected grain leather  
Cuir rectifié



Composizione / Composition / Composition  
**Pelle bovina / Bovine leather / Cuir bovin**

Spessore / Thickness / Epaisseur  
**1,00 mm**

Grandezza media / Average size / Dimension  
moyenne  
**4,20 m<sup>2</sup>**

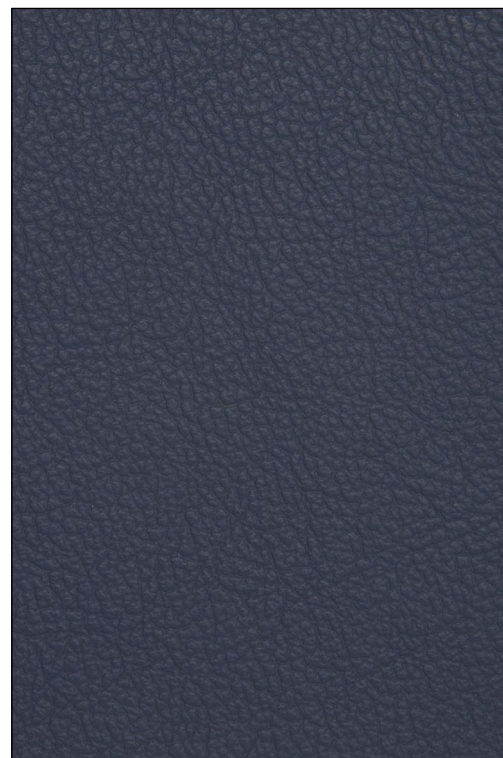


Resistenza alla luce / Light fastness / Résistance  
à la lumière  
**3 (EN ISO 105 B02)**



Resistenza allo sfregamento / Fastness to rubbing  
/ Solidité au frottement  
**40.000 Martindale**

Manutenzione / Maintenance / Entretien  
**Usare acqua e saponi neutri, non usare  
prodotti chimici / Use mild soap and water,  
do not use chemical products / Utiliser  
savon neutre et eau, ne pas utiliser  
produits chimiques**



LX 0344



LX 0017



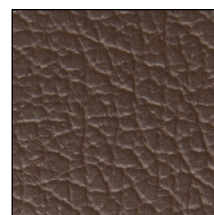
LX 0026



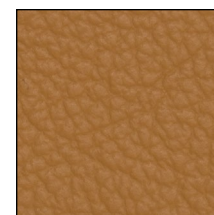
LX 0316



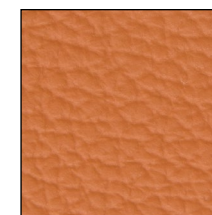
LX 0018



LX 2829



LX 4492



LX 0305



LX 0011



LX 0611



LX 0013



# IR

Tessuto riciclato ignifugo  
Fire retardant recycled fabric  
Tissu recyclé ignifuge



Composizione / Composition / Composition  
**100% PET riciclato / recycled / recyclé**

Peso / Weight / Poids  
**570 g/m2**



Resistenza alla luce / Light fastness / Résistance  
à la lumière  
**7 (UNI EN ISO 105-B02)**

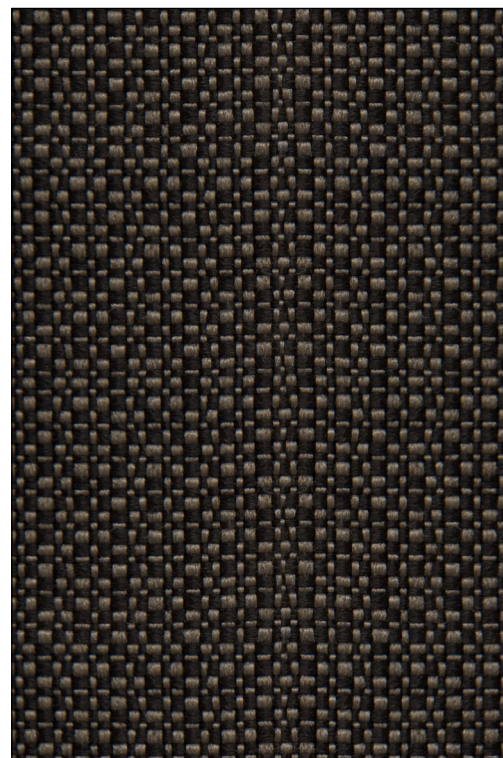


Resistenza allo sfregamento / Fastness to rubbing  
/ Solidité au frottement  
**> 100.000 Martindale cycles**



Ignifugità / Fire retardancy / Réaction au feu  
**EN 1021-1/2 cigarette & match test UK**

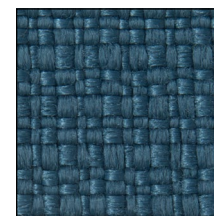
Manutenzione / Maintenance / Entretien  
**Aspirare regolarmente / Vacuum regularly  
/ Aspirer régulièrement**



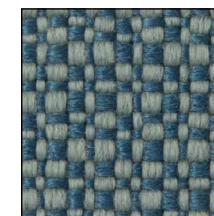
IR 0605



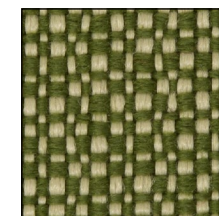
IR 0707



IR 0701



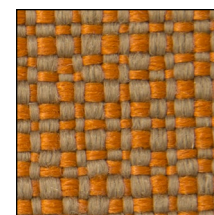
IR 0703



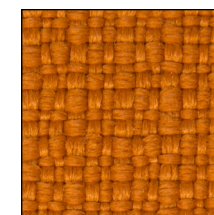
IR 0802



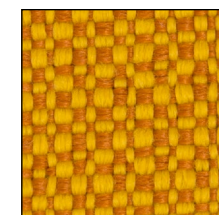
IR 0402



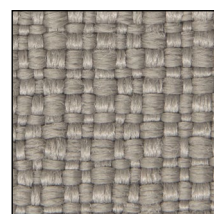
IR 0404



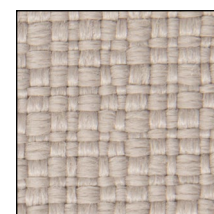
IR 0307



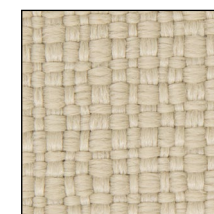
IR 0308



IR 0602



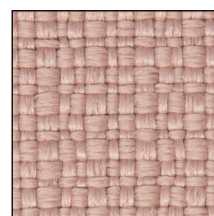
IR 0601



IR 0401



IR 0403



IR 0901

# CU

Cuoio rigenerato  
Reconstituted bonded leather  
Cuir synderme reconstitué



Composizione / Composition / Composition  
**90% Fibre di cuoio / Leather fibers / Fibres de cuir 10% Lattice naturale / Natural latex / Latex naturel**

Manutenzione / Maintenance / Entretien  
**Usare acqua e saponi neutri, non usare prodotti chimici / Use mild soap and water, do not use chemical products / Utiliser savon neutre et eau, ne pas utiliser produits chimiques**



CU 0284



CU 0271



CU 0278



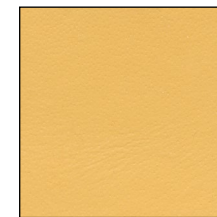
CU 0274



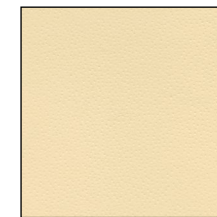
CU 0272



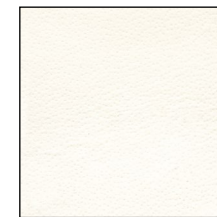
CU 0279



CU 0277



CU 0273



CU 0282

# KT

Tessuto autoportante  
Supportive fabric  
Tissu autoportant



Composizione / Composition / Composition

**61% PES**  
**39% PA**

Peso / Weight / Poids  
**480 gr/m<sup>2</sup>**



Resistenza alla luce / Light fastness / Résistance  
à la lumière

**5 (EN ISO 105 B02)**



Resistenza allo sfregamento / Fastness to rubbing  
/ Solidité au frottement

**>100.000 cycles Martindale**



Ignifugità / Fire retardancy / Réaction au feu  
**EN 1021-1/2 cigarette & match test UK**

Manutenzione / Maintenance / Entretien

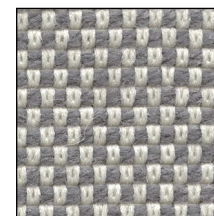
**Aspirare regolarmente / Vacuum regularly**  
**/ Aspirer régulièrement**



KT 0090



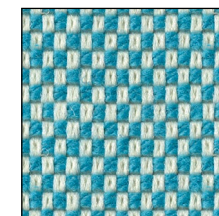
KT 0011



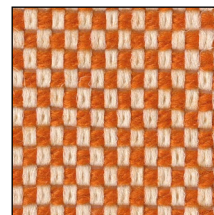
KT 0022



KT 0021



KT 0080



KT 0060

# CM

Rete  
Mesh  
Résille



Composizione / Composition / Composition

**61% PES**  
**39% PA**

Peso / Weight / Poids  
**480 gr/m<sup>2</sup>**



Resistenza alla luce / Light fastness / Résistance  
à la lumière

**5 (EN ISO 105 B02)**



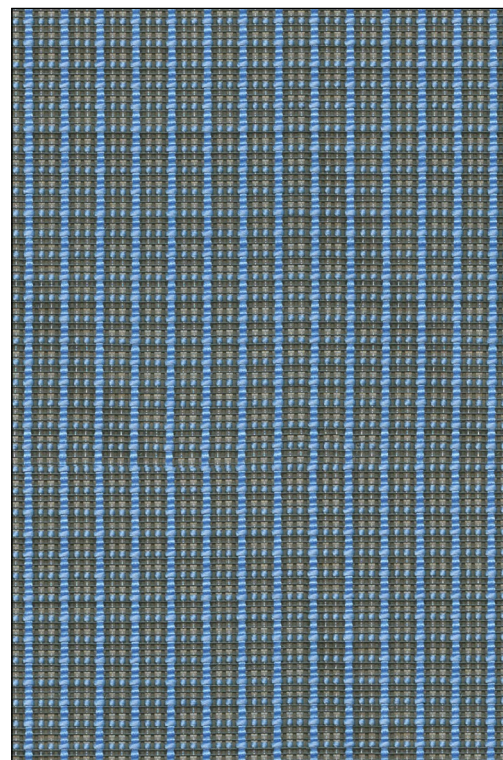
Resistenza allo sfregamento / Fastness to rubbing  
/ Solidité au frottement

**>100.000 cycles Martindale**

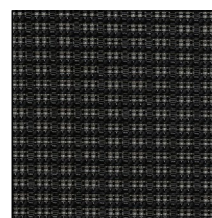


Ignifugità / Fire retardancy / Réaction au feu  
**EN 1021-1/2 cigarette & match test UK**

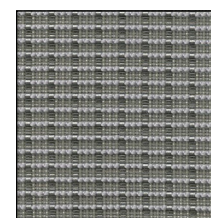
Manutenzione / Maintenance / Entretien  
**Aspirare regolarmente / Vacuum regularly**  
**/ Aspirer régulièrement**



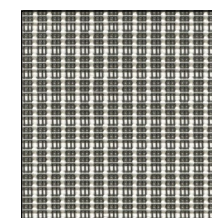
**CM 0700**



**CM 0900**



**CM 0800**



**CM 0600**

# RT

Rete  
Mesh  
Résilie



Composizione / Composition / Composition

**70% PVC**  
**30% PES**

Peso / Weight / Poids

**560 gr/m<sup>2</sup>**



Resistenza alla luce / Light fastness / Résistance  
à la lumière

**8 (EN ISO 4892-2/06)**



Resistenza allo sfregamento / Fastness to rubbing  
/ Solidité au frottement

**100.000 cycles Martindale**

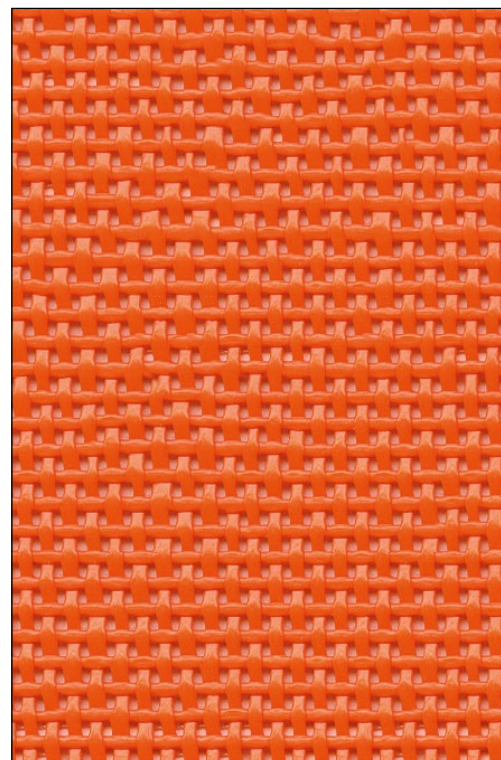


Ignifugità / Fire retardancy / Réaction au feu

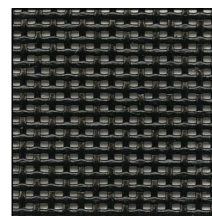
**Su richiesta / On demand / Sur demande**

Manutenzione / Maintenance / Entretien

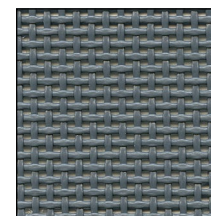
**Usare acqua e saponi neutri, non usare  
prodotti chimici / Use mild soap and water,  
do not use chemical products / Utiliser  
savon neutre et eau, ne pas utiliser produits  
chimiques**



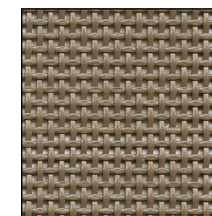
RT 0025



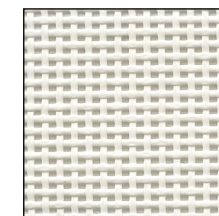
RT 0015



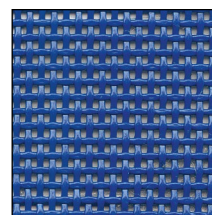
RT 0024



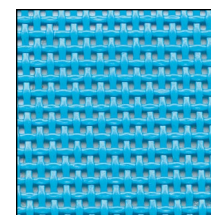
RT 0022



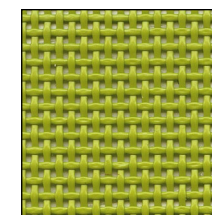
RT 0014



RT 0021



RT 0020



RT 0023

# GO

Rete  
Mesh  
Résilille



Composizione / Composition / Composition

**55% PL**  
**45% PA**

Peso / Weight / Poids  
**280 gr/m2**



Resistenza alla luce / Light fastness / Résistance à la lumière

**6 (EN ISO 105 B02)**



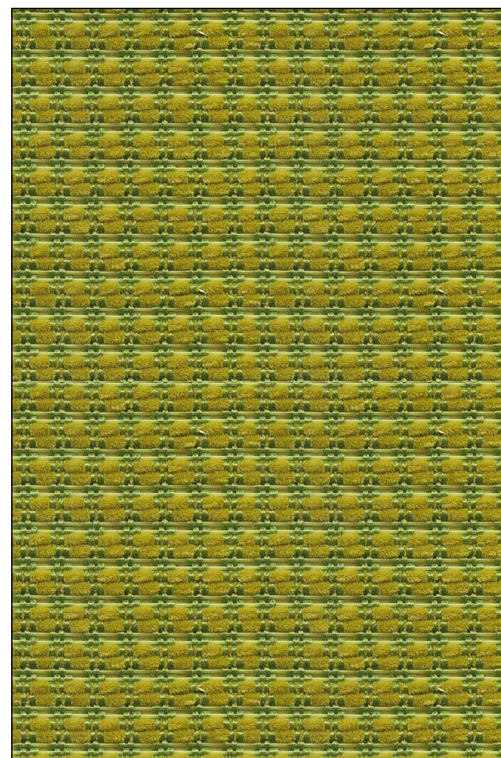
Resistenza allo sfregamento / Fastness to rubbing / Solidité au frottement

**100.000 cycles Martindale**

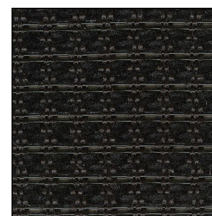


Ignifugità / Fire retardancy / Réaction au feu  
**EN 1021-1/2 cigarette & match test UK**

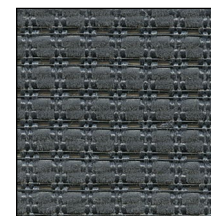
Manutenzione / Maintenance / Entretien  
**Aspirare regolarmente / Vacuum regularly / Aspirer régulièrement**



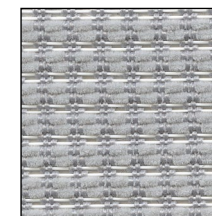
GO 0041



GO 0033



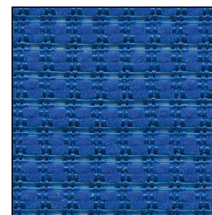
GO 0089



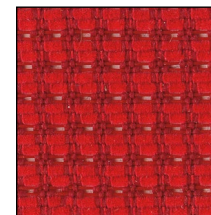
GO 0043



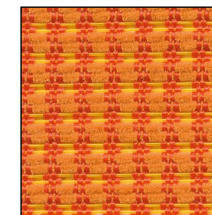
GO 0001



GO 0015



GO 0008



GO 0029

---

## PXV

Plastica Voilà  
Voilà plastic  
Plastique Voilà

---

Composizione / Composition / Composition  
**100% Polipropilene \***



PXV 034



PXV 031



PXV 032



PXV 033

---

## PXW

Plastica Wendy  
Wendy plastic  
Plastique Wendy

---

Composizione / Composition / Composition  
**100% Polipropilene \***



PXW 041



PXW 045



PXW 048



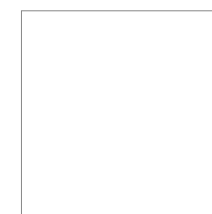
PXW 043



PXW 042



PXW 044



PXW 046

---

## PXR

Plastica Role  
Role plastic  
Plastique Role

---

Composizione / Composition / Composition  
**100% Polipropilene \***



PXR 072



PXR 050



PXR 062



PXR 020



PXR 030



PXR 035

---

\* Per plastiche ignifughe: consultare il servizio commerciale per quotazioni. / For fire retardant plastics: please contact our sales department for quotes. / Pour plastiques version ignifugé: contactez notre service commercial pour les tarifs.

# PXC

Plastica Clark/Lois  
Clark/Lois plastic  
Plastique Clark/Lois

Monoscocca / Shell / Coque

Composizione / Composition / Composition  
**100% Polipropilene \***

Bottone / Button / Bouton

Composizione / Composition / Composition  
**100% Polipropilene \***

Sottosedile / Under seat / Sous assise

Composizione / Composition / Composition  
**100% Polipropilene \***

# PXD

Plastica Dolly  
Dolly plastic  
Plastique Dolly

Composizione / Composition / Composition  
**100% Polipropilene \***



**PXC 070**



**PXC 040**



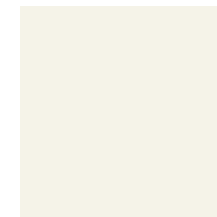
**PXC 035**



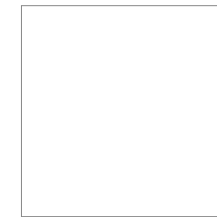
**PXC 052**



**PXC 081**



**PXC 011**



**PXC 010**

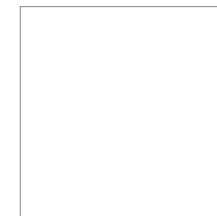
Bottone  
Button  
Bouton



**B070**



**B053**



**B010**

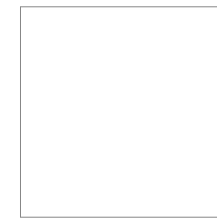
Sottosedile  
Under seat  
Sous assise



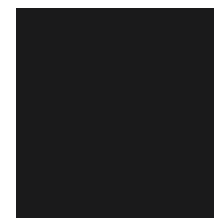
**S070**



**S071**



**S010**



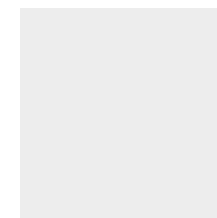
**PXD 090**



**PXD 070**



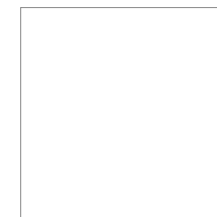
**PXD 051**



**PXD 071**



**PXD 031**



**PXD 011**

\* Per plastiche ignifughe: consultare il servizio commerciale per quotazioni. / For fire retardant plastics: please contact our sales department for quotes. / Pour plastiques version ignifugé: contactez notre service commercial pour les tarifs.



# MILANI

**Milani S.r.l**

**Sede legale/showroom:  
via delle Industrie II, 5/7  
30020 - Meolo VE**

**Sede operativa/uffici  
via Giorgione, 21  
31056 - Roncade TV**

**T. +39 0422 1860501  
F. +39 0422 1860599  
info@sm-milani.com  
www.sm-milani.com**